



The SPH Nithyānanda Paramashivam

Meditate On The Forms of Paramaśiva And Get Enlightened!

Receive Darśan & Blessings



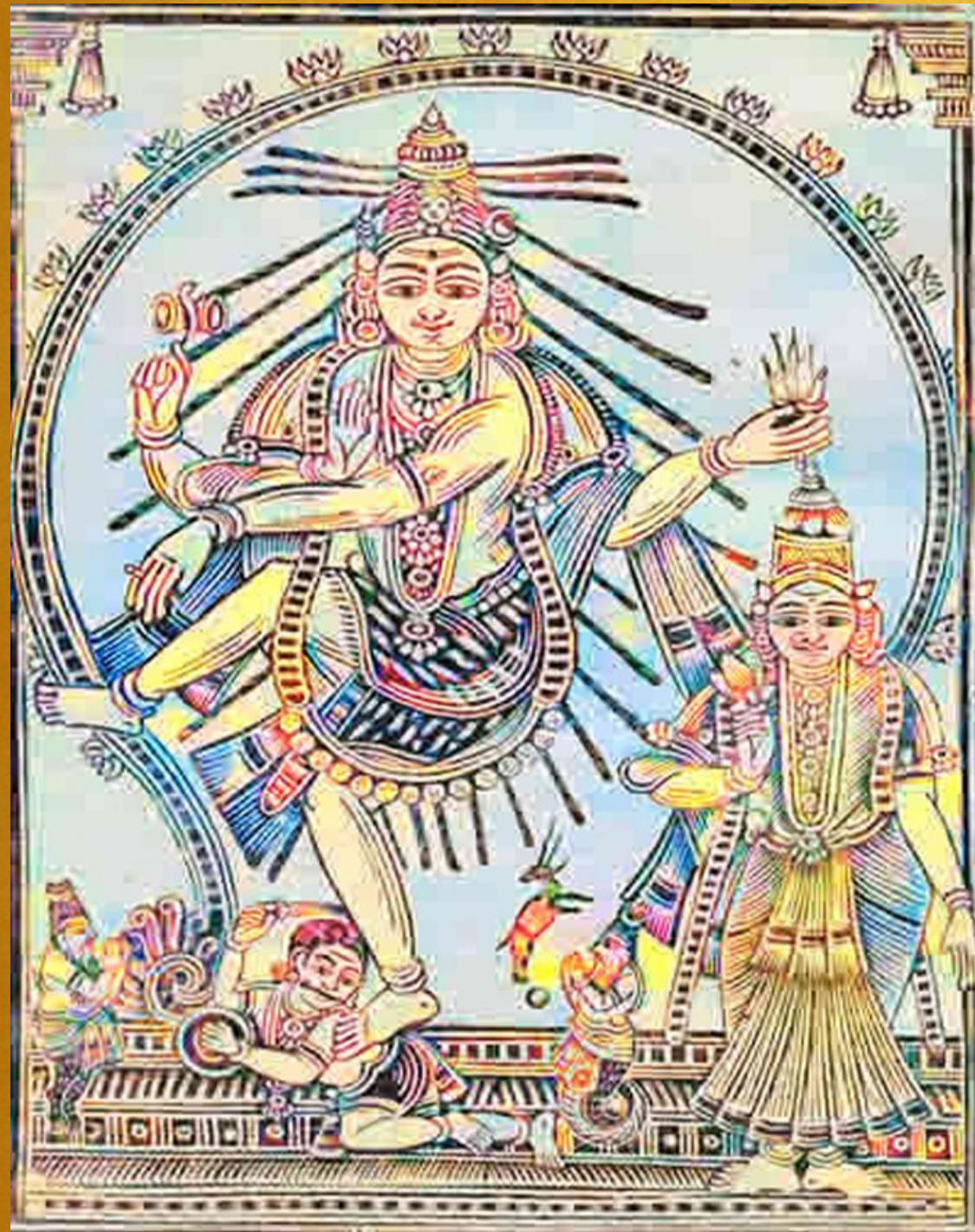
Published by Nithyānanda University Press

Copyright ©2023

The following Darśan of the super conscious mutation manifestation of Paramaśiva with Darśan of Bhagavān Paramaśiva and the SPH Nithyānanda Paramashivam –awaken health and well being. Our recommendation - print these deities, frame them and keep them in your altar, puja room so then keeping a plate (brass/silver/bronze) in front of their Darśan you can offer your gratitude.

Chant the Mahāvākya, remember Paramaśiva, remember He Has come down in the form of Nijavatar, my Guru The SPH Nithyānanda Paramashivam. Connect with seeking and receive your answer!

The line drawings are done by professionals, as described by the Agamas, personally guided by the SPH Nithyānanda Paramashivam. The sequence of how to best receive their darshan, what and how to connect with them is sacred. A lot of time, treasure, talent goes behind these. Research is still ongoing to find, learn more about these manifestations, including efforts that the SPH Nithyānanda Paramashivam is investing in installing these deities in KAILASA and reviving their worship. Please do not think these are random. They are sacred – and we request you revere them with the same respect as a deity. We thank you for your support in reviving this vast knowledge from Hinduism.



16. Sada Nritha Murthy

© 2023 Sri Nithyananda Paramashivam. All Rights Reserved

ध्यायेत्कोटिरविप्रभं त्रिनयनं शीतांशुगङ्गाधरं
दक्षाङ्घ्रिस्थितवामकुञ्चितपदं शार्दूलचर्माम्बरम् ।वह्निं डोलकराभयं
डमरुकं वामे शिवां श्यामलांकल्हारं जपसृक्षुकं कटिकरां देवीं
सभेशं भजे ॥

dhyāyetkoṭiraviprabhaṃ trinayanam
śītāṃśugaṅgādharam
dakṣāṅghristhitavāmakuñcitapadam
śārdūlacarmāmbaram .vahniṃ ḍolakarābhayaṃ
ḍamarukaṃ vāme śivāṃ śyāmalāṃkalhāraṃ
japasṛkṣukaṃ kaṭikarāṃ devīm sabheśaṃ bhaje

I meditate on Him, whose brilliance is as crores of suns, who has three eyes, who has hold Ganga in His locks. Who has His right leg situated and left leg bent, wearing leopard skin as His cloth. Holding fire, having abhaya mudra and damaru in His hands. On His left He has Devi (she who is dark complexioned - śyāmalāṃ) who is holding lotus in one of Her hands and another hand near her hip, I revere that Lord of Sabha (Sabhesha - Nataraja) and Devi.

Individual Results May Vary. Results Not Guaranteed.

© 2023 Sri Nithyananda Paramashivam. All Rights Reserved



15. Sandhya Nritta Murthy

© 2023 Sri Nithyananda Paramashivam. All Rights Reserved



62. Prarthana Murthy

Individual Results May Vary. Results Not Guaranteed.

© 2023 Sri Nithyananda Paramashivam. All Rights Reserved



Lord Nataraja's Form represents-

- Damaru which bestows and Blesses New beginnings in life such as new house, new job etc...
- Abhaya mudra which bestows the completion with yourself, others and life
- Fire which destroys all enmity and incompletions or any obstacle in the path of completion
- His raised leg which represents which pulls you out of the delusion, stress, tension which are created because of the Maya matrix
- The japa mala represents the liberation

17. Chandathandava Murthy



Published by Nithyānanda University Press
Copyright ©2023

All rights reserved. No part of this publication may be reproduced or stored in a retrieval system or transmitted by any form or by any means - electronic, mechanical, photocopying, recording or otherwise, without the written permission of the publisher.